



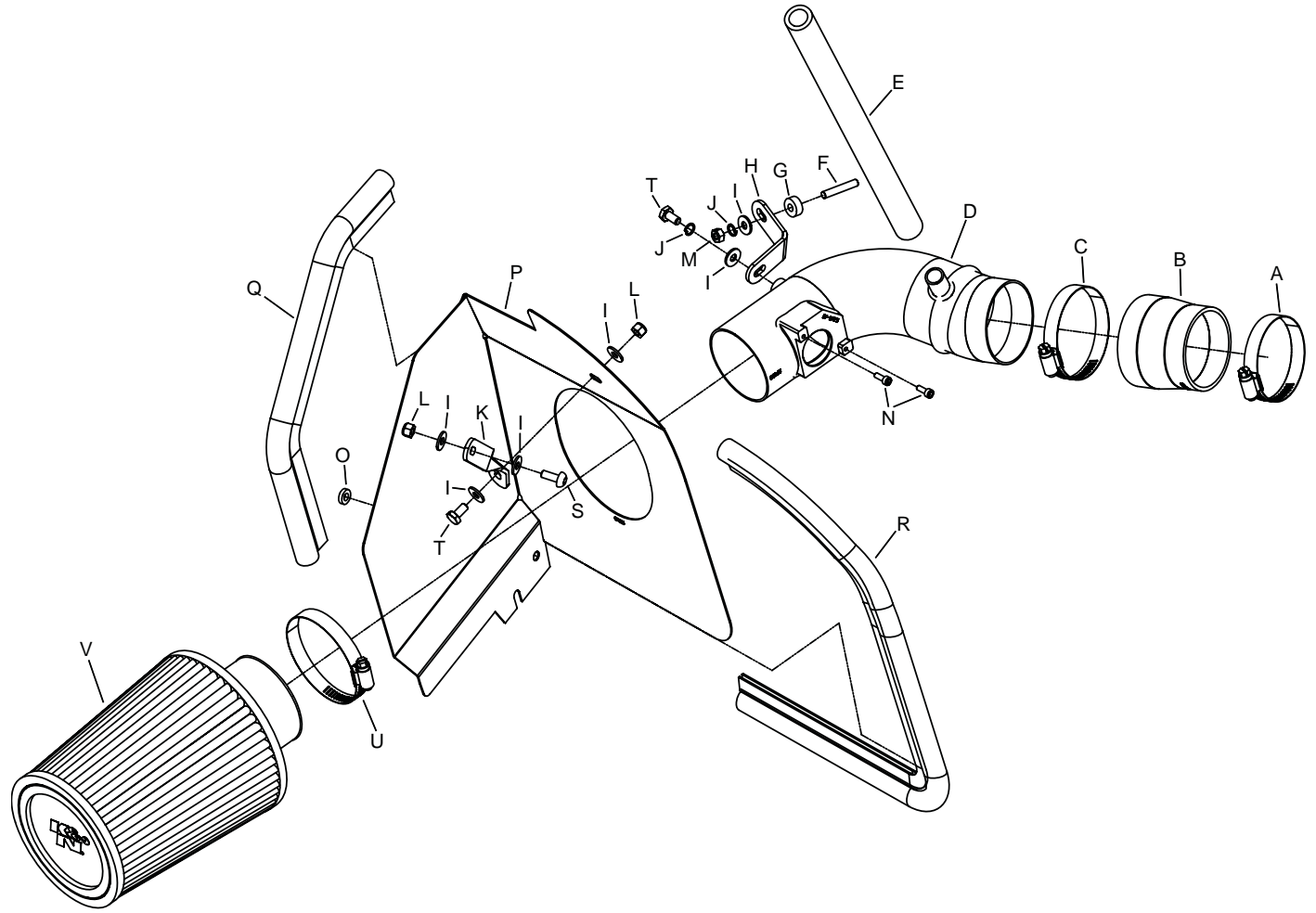
TYPHOON INTAKE SYSTEMS™

INSTALLATION INSTRUCTIONS

69-6011
MAZDA
2007-09 Speed 3
L4-2.3L Turbo

TOOLS:

- Ratchet
- Extension
- 10mm Socket
- Flat Blade Screwdriver
- Phillips Screwdriver
- Pliers
- 3mm Allen Wrench
- 4mm Allen Wrench



PARTS LIST

Desc.	Qty.	Part #	Desc.	Qty.	Part #	Desc.	Qty.	Part #
A Hose Clamp #36	1	08530	I Washer; 6MM Flat, SS	6	08269	Q Edge Trim 14"	1	102475
B Hose; 2-1/2" to 2-3/4" Tprd.; Black	1	084016	J Washer; 1/4" Lock, ZN	2	08198	R Edge Trim 23"	1	102495
C Hose Clamp #40	1	08554	K Bracket; Long	1	07945	S Bolt; M6 X 1.00 X 16MM, Buttonhead	1	07730
D Intake Tube	1	27385	L Nut; 6MM Nylock, Hexhead, SS	2	07512	T Bolt; 6MM-1.00 X 16MM, SS	2	07812
E Hose; 5/8"ID x 14"L, Black	1	084083	M Nut; M6 X 1.00, Hexhead, SS	1	07506	U Hose Clamp #44	1	08577
F Stud; 6MM-1.00 X 35MM L, SS	1	08220	N Bolt; M4-0.07 8MM, A/H Cap, SS	2	07733	V Air Filter	1	RU-4960
G Spacer: .625"OD X .250"ID X .250"L	1	06555	O Washer; 1/4"ID X 1/2"OD X 1/8"Thk., ZN	1	08271			
H Bracket; "L", Stl. FB/PC	1	07804	P Heat Shield	1	07625			

NOTE: FAILURE TO FOLLOW INSTALLATION INSTRUCTIONS AND NOT USING THE PROVIDED HARDWARE MAY DAMAGE THE INTAKE TUBE, THROTTLE BODY AND ENGINE.

TO START:

1. Turn off the ignition and disconnect the negative battery cable.

NOTE: Disconnecting the negative battery cable erases pre-programmed electronic memories. Write down all memory settings before disconnecting the negative battery cable. Some radios will require an anti-theft code to be entered after the battery is reconnected. The anti-theft code is typically supplied with your owner's manual. In the event your vehicles' anti-theft code cannot be recovered, contact an authorized dealership to obtain your vehicles anti-theft code.



2. Remove the two bolts that secure the intercooler cover, then remove the intercooler cover as shown.



3. Disconnect the mass air sensor electrical connection as shown.



4. Loosen the hose clamp that secures the intake tube to the upper airbox housing.



5. Release the two clips that secure the upper airbox housing to the lower airbox housing.



6. Remove the upper airbox housing from the vehicle as shown.



7. Unclip the crankcase vent hose. Remove the complete vent hose as shown.



8. Loosen the hose clamp that secures the intake tube to the turbo inlet, then remove the intake tube as shown.



9. Remove the retaining clip, then slide the rubber airbox mount backwards as shown.



10. Unhook the rubber band that secures the airbox as shown.



11. Lift upwards to dislodge the lower airbox from the mounting grommets. Remove the lower airbox from the vehicle as shown.
NOTE: K&N Engineering, Inc., recommends that customers do not discard factory air intake.



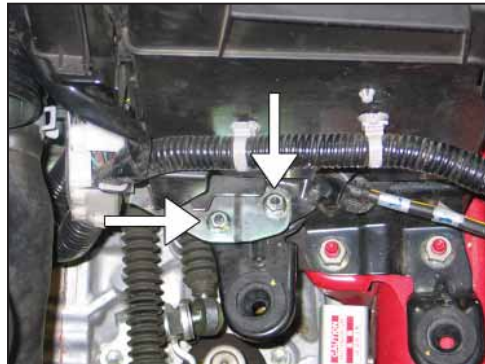
12. Install the short edge trim onto the heat shield as shown.

NOTE: Some trimming of the edge trim may be necessary.



13. Install the long edge trim onto the heat shield as shown.

NOTE: Some trimming of the edge trim may be necessary.



14. Remove the two nuts that secure the wiring harness loom as shown.

NOTE: The two nuts will be reused in a later step.



15. Install the provided spacer onto the inner wiring loom stud as shown.



16. Install the heat shield onto the wiring loom mounting studs, then secure with the nuts removed in step #14.



17. Install the heat shield mounting bracket (07945) onto the heat shield with the provided hardware.

NOTE: Do not tighten the mounting bracket at this time.



18. Swing the heat shield bracket up under the core support, then mount to the core support using the provided hardware as shown.



19. Remove the mass air sensor from the stock upper airbox housing as shown.



20. Install the mass air sensor into the K&N® intake tube with the provided hardware as shown.



21. Install the tube mounting bracket (#07804) onto the K&N® intake tube with the provided hardware as shown.



22. Install the provided silicone hose (#084016) onto the turbo inlet with the provided hose clamp as shown.



23. Remove the solenoid valve mounting bolt shown.



24. Install the K&N® intake tube into the silicone hose at the turbo inlet.



25. Align the intake tube mounting bracket with the solenoid valve, install the provided spacer under the mounting bracket, and secure with the provided hardware. Tighten the hose clamps at the turbo inlet.



26. Install the provided crankcase vent hose onto the intake tube. Connect the open end to the crankcase vent port (on the engine) as shown.



27. Install the K&N® air filter onto the intake tube and secure with the provided hose clamp.



28. Re-connect the mass air sensor electrical connection.



29. Reinstall the engine cover and secure with the factory bolts (removed in step #2).



30. Reconnect the vehicle's negative battery cable. Check to ensure all hose clamps and fittings are properly tightened and positioned correctly before starting the vehicle.

31. It will be necessary for all K&N® high flow intake systems to be checked periodically for realignment, clearance and tightening of all connections. Failure to follow the above instructions or proper maintenance may void warranty.

ROAD TESTING:

1. Start the engine with the transmission in neutral or park, and the parking brake engaged. Listen for air leaks or odd noises. For air leaks secure hoses and connections. For odd noises, find cause and repair before proceeding. This kit will function identically to the factory system except for being louder and much more responsive.

2. Test drive the vehicle. Listen for odd noises or rattles and fix as necessary.

3. If road test is fine, you can now enjoy the added power and performance from your kit.

4. K&N Engineering, Inc., suggests checking the air filter element periodically for excessive dirt build-up. When the element becomes covered in dirt (or once a year), service it according to the instructions on the Recharger® service kit, part number 99-5000 or 99-5050.

50-STATE STREET LEGAL
K&N CARB EXEMPT

FREE K&N® DECAL To register your warranty, please see us online at knfilters.com/register. FREE K&N® DECAL

• 1455 CITRUS ST., P.O. BOX 1329, RIVERSIDE, CA., U.S.A. 92502 • TECH SERVICE 800-858-3333 • FAX 951-826-4001
 • e-mail: tech@knfilters.com • WWW: <http://www.knfilters.com>

08/18/11
19500D