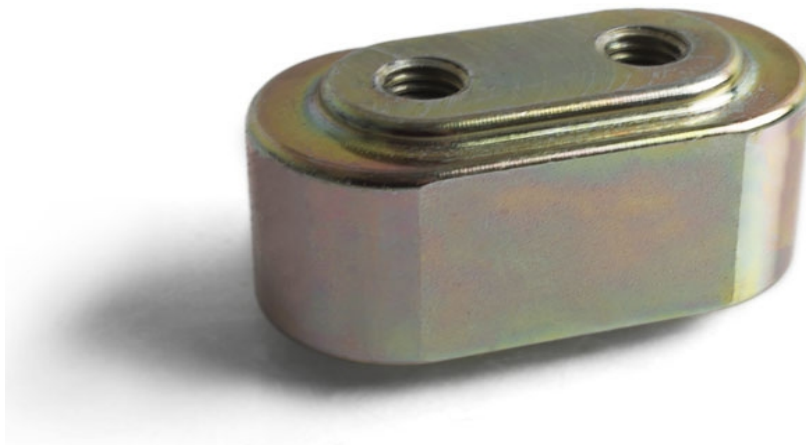




## 271300 – COBB Tuning MAZDASPEED Shifter Weight

### Install Instructions



Congratulations on your purchase of the COBB Tuning Shifter Weight. The following instructions will assist you through your installation process. Please read them first BEFORE beginning the install and familiarize yourself with the steps and tools needed. If you feel that you cannot properly perform this installation, we HIGHLY recommend you take the vehicle to a qualified and experienced automotive technician.

#### Part List

- Shifter Weight

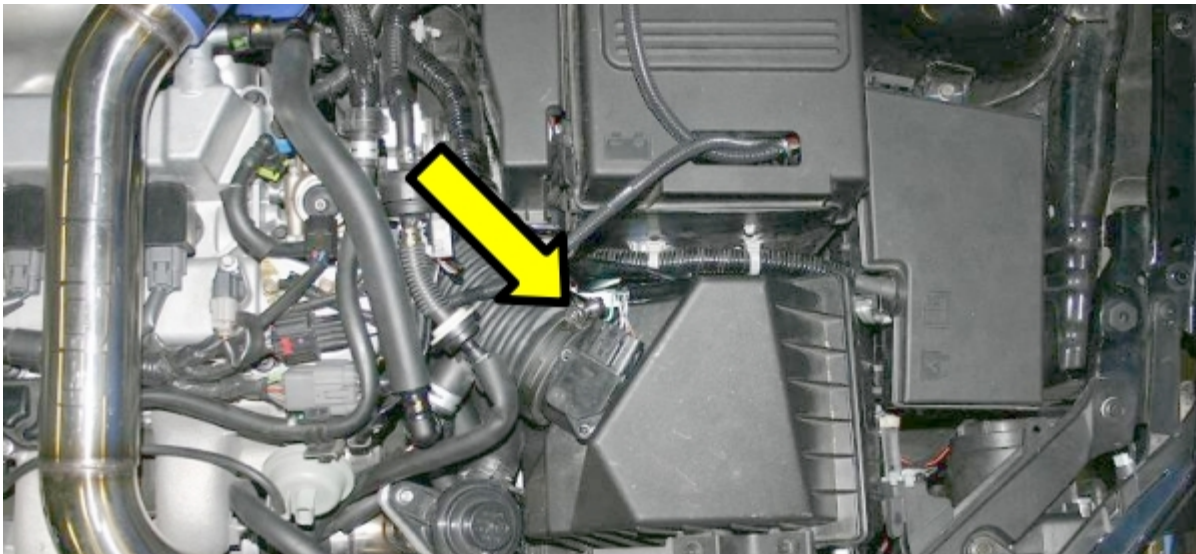
#### Tools Needed

- 3/8" drive socket
- 10mm socket or nut driver
- 12mm socket or nut driver

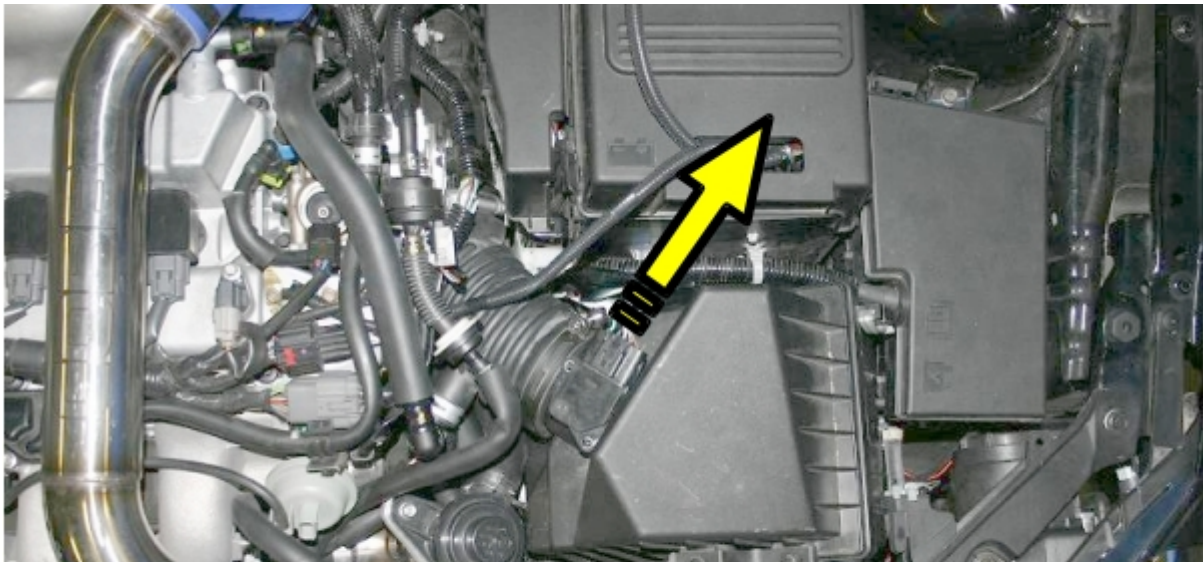


## Removal of Stock Airbox

1. Using a 10mm socket, loosen the hose clamp that connects the accordion rubber hose to the intake box.



2. Unplug the Mass Air Flow (MAF) harness from the MAF sensor by pushing down on the tab and pulling away from you.

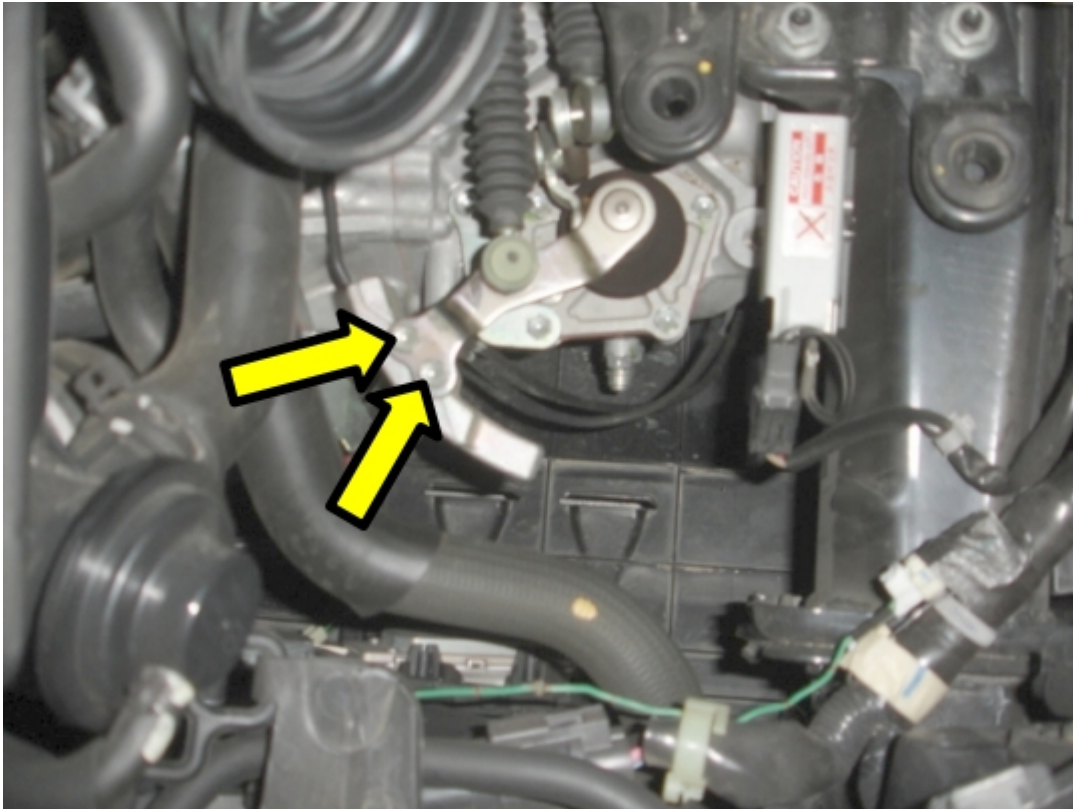




3. To remove the box, squeeze together the white retaining clip and pull up. Slide the rubber stop away from you. Remove the rubber retaining strap on the left side of the box by pulling up and to the left. Pull up on the box to pull it out of the two rubber plungers at the bottom of the box.

#### **Removal of Stock Shift Weight**

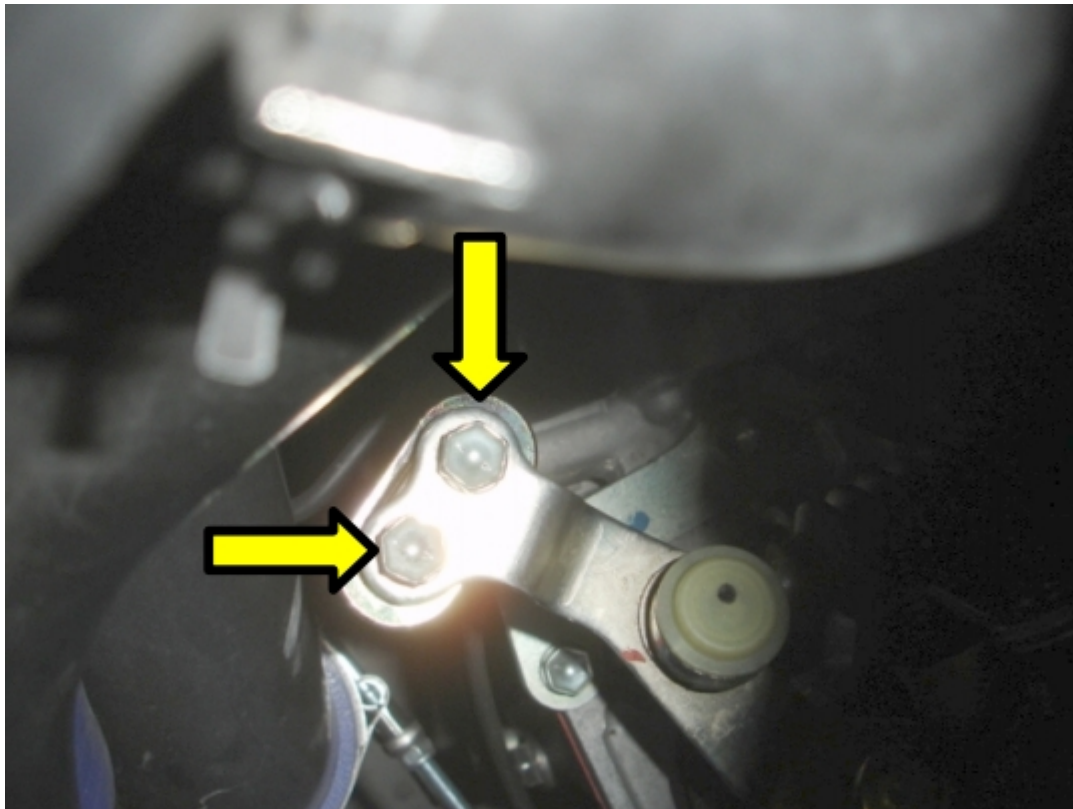
1. For easiest removal, put the vehicle's shifter into 1<sup>st</sup> gear or Reverse. Use a 12mm socket to remove the two bolts holding the stock shift weight. Remove the stock shift weight.





### Installation of COBB Shift Weight

1. Using the two stock shift weight bolts and a 12mm socket, attach the COBB Shift Weight and torque them to 15 ft-lbs of torque.



2. To reinstall the stock intake, please follow Steps 1-4 in reverse order.
3. Enjoy your new COBB Shift Weight!